



Illuminated Pushbutton Switches waterproof

Specifications:

Contact rating:	momentary: 125 V AC, 125 mA	32 V AC, 400 mA	50 V DC, 100 mA
	latching: 125 V AC, 2 A	24 V DC, 100 mA	
Contact resistance:	<50 mΩ		
Insulation resistance:	>1000 MΩ		
Dielectric strength:	1000V, 50 Hz for the duration of 1 minute		
Operating temperature:	-30 °C to +85 °C		
Operating force:	3.5 N ± 1.5 N		
Mechanical life:	minimum 1 000 000 operations		
Material:	Surface of contacts, terminals: gold over silver plated Base: DAP, UL 94 V-0 Case, Cap: PA 66		
Ingress Protection:	IP 67		
Mounting:	snap-in or bushing M12x0.75, key 14 mm		
Soldering conditions:	hand soldering, max. 5 s, 350 °C		
Travel:	momentary: 1.5 mm, latching: 2.5 mm		

Models: Switching functions

DPW 1 AG-K	on – off		
DPW 1 BG S-K	on – (mom)		
DPW 1 CG-B	off – mom		

Ordering Code:

DPW 1 G -

Switching function: <input type="checkbox"/> A on – off <input type="checkbox"/> B on – (mom) <input type="checkbox"/> C off – mom	Bushing: <input type="checkbox"/> Thread <input type="checkbox"/> S Snap-in (not for switching function A)	Actuator: <input type="checkbox"/> W white <input type="checkbox"/> K black <input type="checkbox"/> R red <input type="checkbox"/> O orange <input type="checkbox"/> Y yellow <input type="checkbox"/> G green <input type="checkbox"/> B blue	Terminals: <input type="checkbox"/> Solder tags <input type="checkbox"/> FO Fast-on
--	---	---	--

knitter-switch

Illuminated Pushbutton Switches waterproof

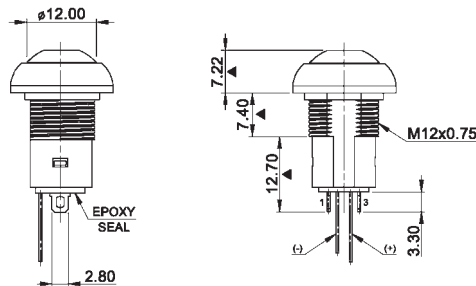


Specifications:

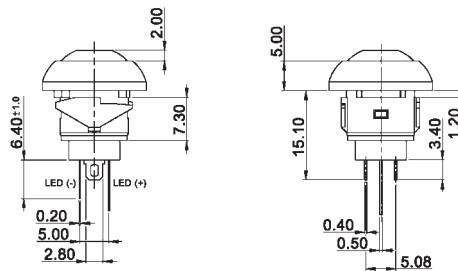
Contact rating:	125 V AC, 125 mA / 50 V DC, 100 mA / 32 V AC, 400 mA
Contact resistance:	< 50 mΩ
Insulation resistance:	> 1000 MΩ at 500 V DC
Dielectric strength:	1000 V, 50 Hz for the duration of 1 minute
Operating temperature:	-30 °C to +85 °C
Mechanical life:	minimum 1 000 000 operations
Contacts:	gold-plated over silver
Terminals:	gold-plated
Travel:	1,5 mm
Material:	case: thermoplastic meets UL 94 V-0; button: PA
Protection:	IP 67
Soldering conditions:	hand-soldering – max.: 3 sec, 300 °C

Models: Switching functions

DPWL 1 AG KG on – off



DPWL 1 CG S-KY off – mom



Ordering Code:

DPWL 1 G -

Switching function:

- A F – F₀
- B F – T₀
- C F₀ – T

Bushing:

- Thread
- S Snap-in (not for switching function A)

Actuator:

- W white
- K black
- R red
- O orange
- Y yellow
- G green
- B blue

LEDs:

- W white
- R red
- Y yellow
- G green
- B blue
- YG yellow/green
- YB yellow/blue
- YR yellow/red
- RG red/green
- RB red/blue
- GB green/blue

Terminals:

- Solder tags
- FO Fast-on

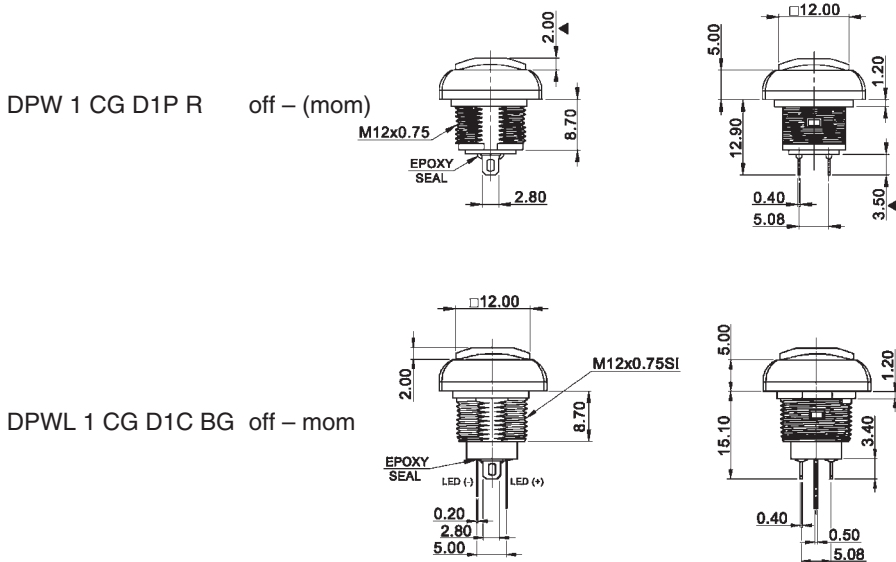


Illuminated Pushbutton Switches waterproof

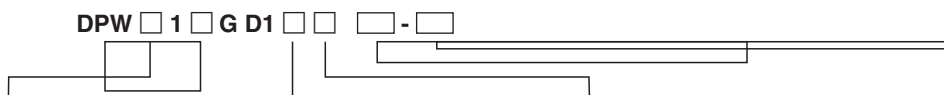
Specifications:

Contact rating:	250 V AC, 200 mA 48 V AC, 500 mA 50 V DC, 200 mA
Contact resistance:	<50 mΩ
Insulation resistance:	> 1000 MΩ
Dielectric strength:	1000 V, 50 Hz for the duration of 1 minute
Operating temperature:	-30 °C to +85 °C
Operating force:	3.5 N ± 1.5 N
Mechanical life:	minimum 1 000 000 operations
Material:	Surface of contacts, terminals: gold over silver plated Base: DAP, UL 94 V-0 Case: Zinc alloy Cap: PA 66
Ingress Protection:	IP 67
Mounting:	bushing M12x0.75, key 14 mm
Soldering conditions:	hand soldering, max. 5 s, 350 °C
Travel:	1.5 mm

Models: Switching functions



Ordering Code:



Lighting:	Switching function:	Housing surface:	Actuator:	LEDs:	Terminals:
<input type="checkbox"/> without	<input type="checkbox"/> on – (mom)	<input type="checkbox"/> P black ED-coated	<input type="checkbox"/> W white	<input type="checkbox"/> W white	<input type="checkbox"/> Solder tags
<input type="checkbox"/> light	<input type="checkbox"/> C off – mom	<input type="checkbox"/> A shining chrome	<input type="checkbox"/> K black	<input type="checkbox"/> R red	<input type="checkbox"/> FO Fast-on
		<input type="checkbox"/> B Nickel-tin coated	<input type="checkbox"/> R red	<input type="checkbox"/> Y yellow	
		<input type="checkbox"/> C matt chrome plated	<input type="checkbox"/> O orange	<input type="checkbox"/> G green	
		<input type="checkbox"/> D matt nickel plated	<input type="checkbox"/> Y yellow	<input type="checkbox"/> B blue	
			<input type="checkbox"/> G green	<input type="checkbox"/> YG yellow/green	
			<input type="checkbox"/> B blue	<input type="checkbox"/> YB yellow/blue	
				<input type="checkbox"/> YR yellow/red	
				<input type="checkbox"/> RG red/green	
				<input type="checkbox"/> RB red/blue	
				<input type="checkbox"/> GB green/blue	

Illuminated Pushbutton Switches waterproof



Specifications:

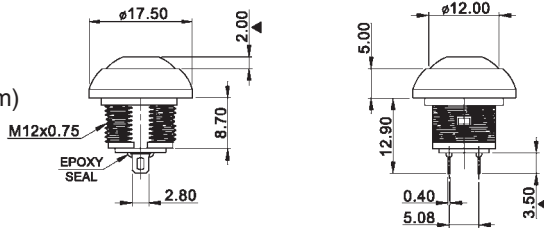
Contact rating:	250 V AC, 200 mA 48 V AC, 500 mA 50 V DC, 200 mA
Contact resistance:	< 50 mΩ
Insulation resistance:	> 1000 MΩ
Dielectric strength:	1000 V, 50 Hz for the duration of 1 minute
Operating temperature:	-30 °C to +85 °C
Operating force:	3.5 N ± 1.5 N
Mechanical life:	minimum 1 000 000 operations
Material:	Surface of contacts, terminals: gold over silver plated Base: DAP, UL 94 V-0 Case: Zinc alloy Cap: PA 66
Ingress Protection:	IP 67
Mounting:	bushing M12x0.75, key 14 mm
Soldering conditions:	hand soldering, max. 5 s, 350 °C
Travel:	1.5 mm

Models:

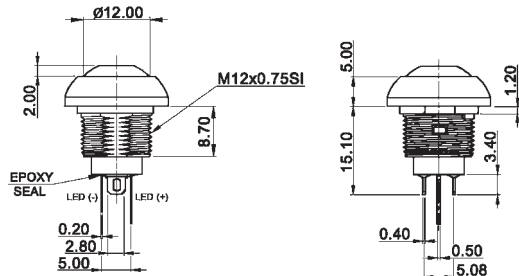
Switching functions

DPW 1 CG D2P R

off – (mom)



DPWL 1 CG D2C KG off – mom



Ordering Code:

DPW 1 G D2 -

Lighting:

- without
- light

Switching function:

- on – (mom)
- off – mom

Housing surface:

- black ED-coated
- shining chrome
- Nickel-tin coated
- matt chrome plated
- matt nickel plated

Actuator:

- white
- black
- red
- orange
- yellow
- green
- blue

LEDs:

- white
- red
- yellow
- green
- blue
- yellow/green
- yellow/blue
- yellow/red
- red/green
- red/blue
- green/blue

Terminals:

- Solder tags
- Fast-on



Illuminated Pushbutton Switches waterproof

Specifications:

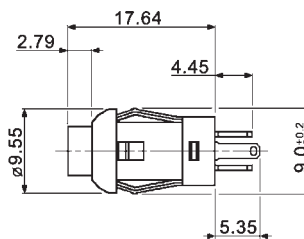
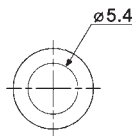
Contact rating:	30 V DC, 100 mA
Contact resistance:	<50 mΩ
Insulation resistance:	> 100 MΩ
Dielectric strength:	500 V, 50 Hz for the duration of 1 minute
Operating temperature:	-40 °C to +85 °C
Operating force:	2.5 N ± 1 N
Mechanical life:	minimum 50 000 operations
Material:	Surface of contacts, terminals: gold over nickel plated Case: PA 66 Cap: PC
Mounting:	snap-in, mounting-hole diameter 8 mm, panel thickness 0.8...1.2 mm
Soldering conditions:	hand soldering, max. 3 s, 300 °C
Travel:	1.2 mm

Models:

Switching function

DPL 1 CB x

off – mom



Ordering Code:

DPL 1 CB

LEDs:

- W white
- R red
- Y yellow
- G green
- B blue
- BG blue/green

knitter-switch

Distributor: Sider Electronic Industries Ltd.
Tel: 852-23892522 Fax: 852-23574546
Email: info@sider.com.hk URL: www.sider.com.hk