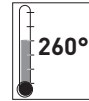


Tact Switches



Specifications:

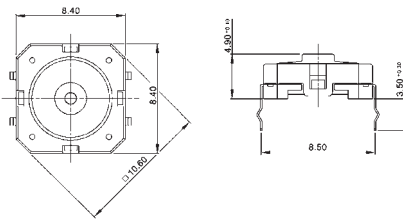
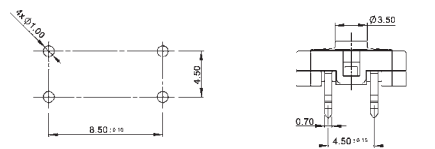
Contact rating:	42 V AC/DC, 100 mA
Contact resistance:	< 100 mΩ
Insulation resistance:	> 1000 MΩ bei 100 V DC
Dielectric strength:	250 V DC, 50 Hz for the duration of 1 minute
Operating temperature:	-40 °C to +80 °C
Mechanical life:	1 000 000 operations
Contacts:	gold-plated
Terminals:	terminal pin, copper alloy, gold-plated
Material:	case: PA6, washable button: TPE-S
Mounting:	on PC-board, TSSE 12 S: SMD

Models:

Switching functions

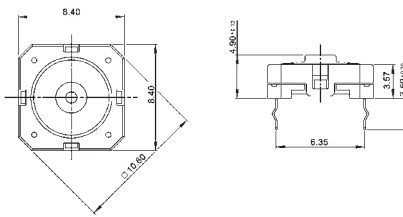
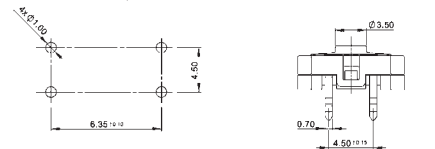
TSE 8 S

off - mom



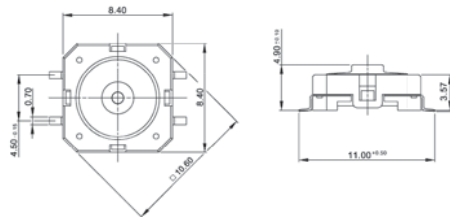
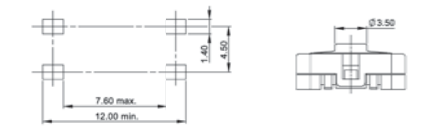
TSE 8 S-1

off - mom



TSSE 8 S

off - mom

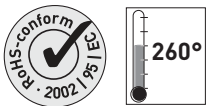


washable



knitter-switch

Distributor: Sider Electronic Industries Ltd.
 Tel: 852-23892522 Fax: 852-23574546
 Email: info@sider.com.hk URL: www.sider.com.hk



Tact Switches

Specifications:

Contact rating:	42 V AC/DC, 100 mA
Contact resistance:	< 100 mΩ
Insulation resistance:	> 1000 MΩ bei 100 V DC
Dielectric strength:	250 V DC, 50 Hz for the duration of 1 minute
Operating temperature:	-40 °C to +80 °C
Mechanical life:	1 000 000 operations
Contacts:	gold-plated
Terminals:	terminal pin, copper alloy, gold-plated
Material:	case: PA46 / PA6T, washable button: silicon caoutchouc
Mounting:	on PC-board, TSSE 12 S: SMD

3

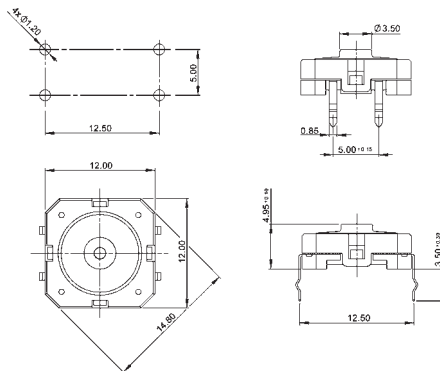
washable

Models:

Switching functions

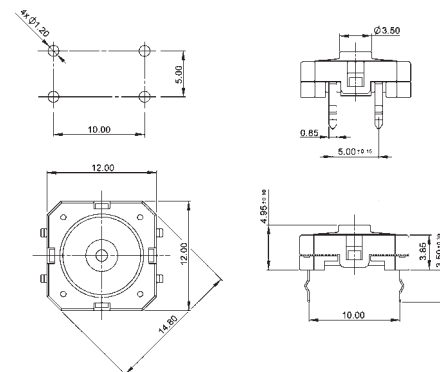
TSE 12 S

off - mom



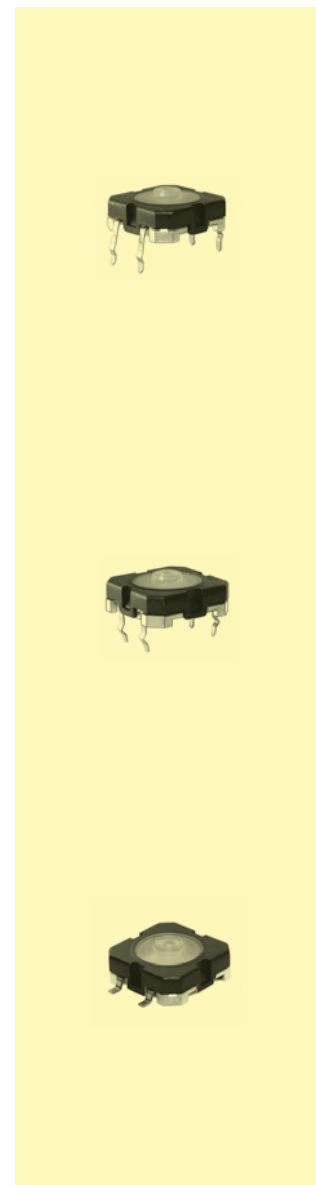
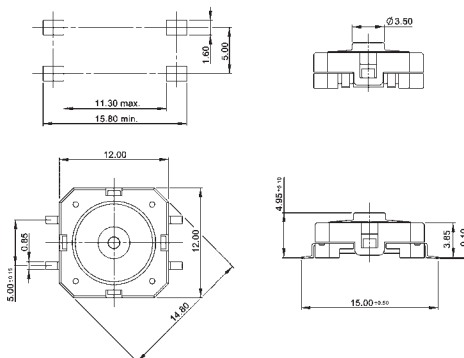
TSE 12 S-1

off - mom

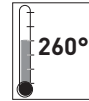


TSSE 12 S

off - mom



Tact Switches for SMT

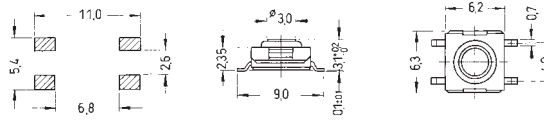


Specifications:

Contact rating:	12 V DC, 50 mA
Contact resistance:	< 100 mΩ
Insulation resistance:	> 100 MΩ at 500 V DC
Dielectric strength:	250 V, 50 Hz for the duration of 1 minute
Operating temperature:	- 40 °C to + 85 °C
Electrical life:	TSSE 66/68 minimum 100 000 cycles TSSE 65/67/69 minimum 500 000 cycles
Operating force:	see ordering code
Contacts:	phosphor bronze, silver-plated
Terminals:	brass, silver-plated
Material:	cover: stainless steel base: high-temp. nylon meets UL 94 V-0, washable stem: TSSE 66: nylon – TSSE 65/67/68/69: silicone rubber
Protection:	IP 57
Mounting:	on pc-board – SMD
Packing:	on tapes – see ordering code

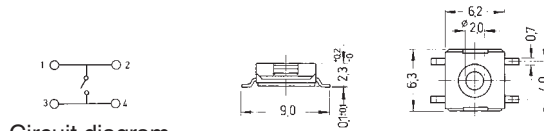
Models:

TSSE 66 □



PCB Layout

TSSE 68 □

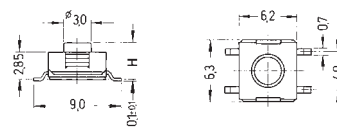


Circuit diagram

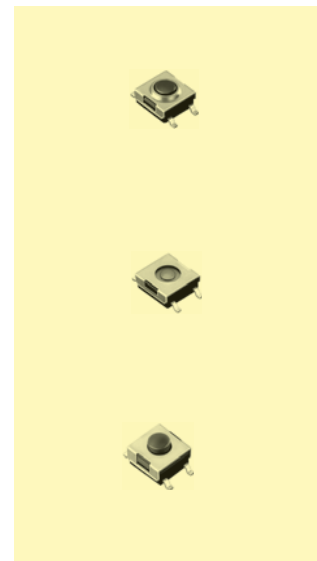
TSSE 65 □

TSSE 67 □

TSSE 69 □



washable



Ordering code:

TSSE □ □

Dimension H

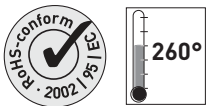
65	3,5 mm, travel: 0,45 ± 0,2	brown	(N) / 1900 pieces/reel
65	3,5 mm, travel: 0,45 ± 0,2	red	(R) / 1900 pieces/reel
65	3,5 mm, travel: 0,45 ± 0,2	transparent	(T) / 1900 pieces/reel
66	3,1 mm, travel: 0,25 + 0,2/- 0,1	brown	(N) / 2000 pieces/reel
67	5,2 mm, travel: 0,45 ± 0,2	brown	(N) / 900 pieces/reel
67	5,2 mm, travel: 0,45 ± 0,2	red	(R) / 900 pieces/reel
67	5,2 mm, travel: 0,6 ± 0,2	transparent	(T) / 900 pieces/reel
68	2,3 mm, travel: 0,25 + 0,2/- 0,1	silver	(S) / 2000 pieces/reel
69	3,8 mm, travel: 0,45 ± 0,2	red	(R) / 1900 pieces/reel
69	3,8 mm, travel: 0,45 ± 0,2	brown	(N) / 1900 pieces/reel
69	3,8 mm, travel: 0,6 ± 0,2	transparent	(T) / 1900 pieces/reel

Colour of stem

for operating force:

□	1,6 N, silver
□	1,6 N, brown
□	2,6 N, red
□	3,6 N, transparent

further types on request



Tact Switches for SMT

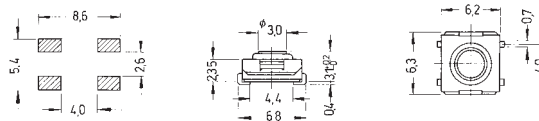
Specifications:

Contact rating:	12 V DC, 50 mA
Contact resistance:	< 100 mΩ
Insulation resistance:	> 100 MΩ at 500 V DC
Dielectric strength:	250 V, 50 Hz for the duration of 1 minute
Operating temperature:	- 40 °C to + 85 °C
Electrical life:	TSSE 66-J/68-J: minimum 100 000 cycles TSSE 65-J/67-J/69-J: minimum 500 000 cycles
Operating force:	see ordering code
Contacts:	phosphor bronze, silver-plated
Terminals:	brass, silver-plated
Material:	cover: stainless steel base: high-temp. nylon meets UL 94 V-0, washable stem: TSSE 66 J: nylon – TSSE 65/67/68/69 J: silicone rubber
Protection:	IP 57
Mounting:	on pc-board – SMD
Packing:	on tapes – see ordering code

3

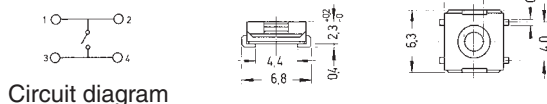
Models:

TSSE 66 □-J



PCB Layout

TSSE 68 □-J

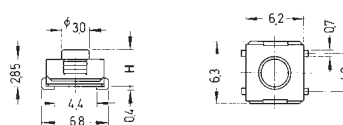


Circuit diagram

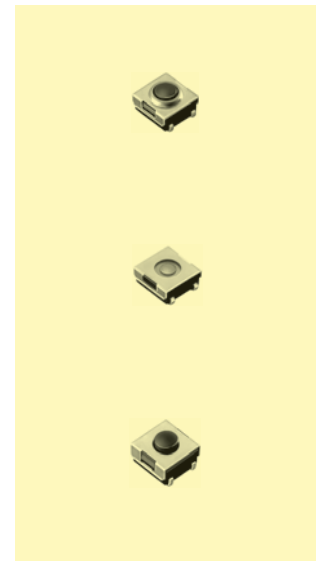
TSSE 65 □-J

TSSE 67 □-J

TSSE 69 □-J



washable



Ordering code:

TSSE □ □-J

Dimension H

65	3,5 mm, travel: 0,45 ± 0,2	brown	(N) / 1800 pieces/reel
65	3,5 mm, travel: 0,45 ± 0,2	red	(R) / 1800 pieces/reel
65	3,5 mm, travel: 0,45 ± 0,2	transparent	(T) / 1800 pieces/reel
66	3,1 mm, travel: 0,25 + 0,2/- 0,1	brown	(N) / 1900 pieces/reel
67	5,2 mm, travel: 0,45 ± 0,2	brown	(N) / 900 pieces/reel
67	5,2 mm, travel: 0,45 ± 0,2	red	(R) / 900 pieces/reel
67	5,2 mm, travel: 0,6 ± 0,2	transparent	(T) / 900 pieces/reel
68	2,3 mm, travel: 0,25 + 0,2/- 0,1	silver	(S) / 2700 pieces/reel
69	3,8 mm, travel: 0,45 ± 0,2	red	(R) / 1800 pieces/reel
69	3,8 mm, travel: 0,45 ± 0,2	brown	(N) / 1800 pieces/reel
69	3,8 mm, travel: 0,6 ± 0,2	transparent	(T) / 1800 pieces/reel

Colour of stem

for operating force:

5	1,6 N, silver
N	1,6 N, brown
R	2,6 N, red
T	3,6 N, transparent

further types on request

Tact Switches

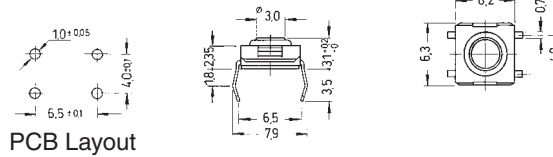


Specifications:

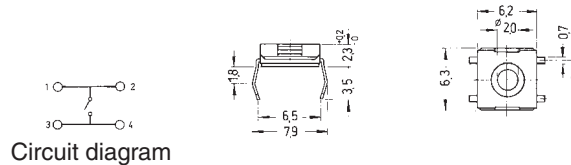
Contact rating:	12 V DC, 50 mA
Contact resistance:	< 100 mΩ
Insulation resistance:	> 100 MΩ at 500 V DC
Dielectric strength:	250 V, 50 Hz for the duration of 1 minute
Operating temperature:	- 40 °C to + 70 °C
Electrical life:	TSE 66/68 minimum 100 000 cycles TSE 69 minimum 500 000 cycles
Operating force:	see ordering code
Contacts:	phosphor bronze, silver-plated
Terminals:	PC terminals brass, silver-plated
Material:	cover: stainless steel base: high-temp. nylon meets UL 94 V-0, washable stem: TSE 66: nylon – TSE 68/69: silicone rubber
Protection:	IP 57
Mounting:	on pc-board
Soldering conditions:	hand-soldering – max.: 30 W, 2 sec, 320 °C auto-soldering – max.: 5 sec, 260 °C subject to PCB 1,6 mm thickness
Packing:	75 pcs/tube

Models:

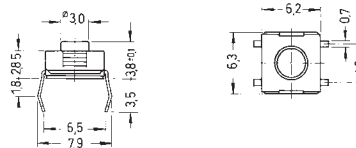
TSE 66 □



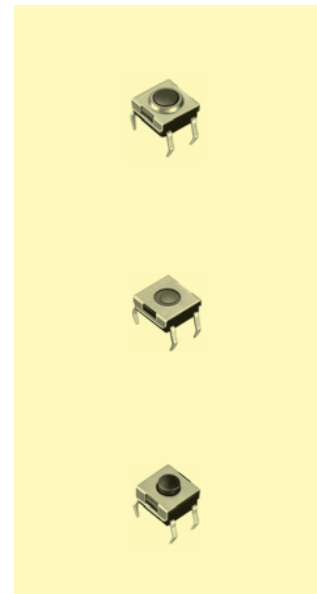
TSE 68 □



TSE 69 □

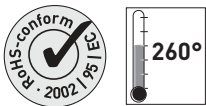


washable



Ordering code:

TSE □ □ □	
<p>Dimension</p> <p>66 3,1 mm, travel: 0,25 + 0,2/- 0,1 brown (N)</p> <p>68 2,3 mm, travel: 0,25 + 0,2/- 0,1 silver (S)</p> <p>69 3,8 mm, travel: 0,45 ± 0,2 red (R)</p> <p>69 3,8 mm, travel: 0,45 ± 0,2 brown (N)</p>	<p>Colour of stem for operating force:</p> <p>S 1,6 N, silver</p> <p>N 1,6 N, brown</p> <p>R 2,6 N, red</p>

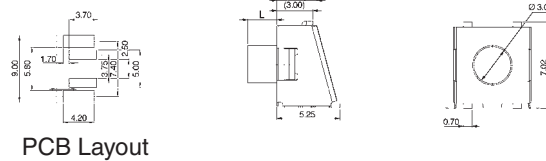


Specifications:

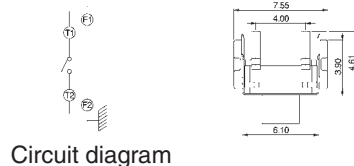
Contact rating:	12 V DC, 50 mA
Contact resistance:	< 100 mΩ
Insulation resistance:	> 100 MΩ
Dielectric strength:	250 V AC (50 Hz or 60 Hz) for 1 minute
Operating temperature:	- 25 °C to + 70 °C
Operating force:	see ordering code
Mechanical life:	minimum 500 000 cycles
Cover:	nickel, silver-plated
Case:	high-temp. PA 9T UL 94 V-0, black
Stem:	silicone
Contacts:	phosphor bronze, silver-plated
Terminals:	brass, silver-plated
Protection:	IP 57
Packing:	on tapes – see ordering code

Models:

TSSE 6 -RA

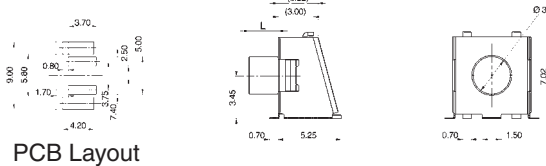


PCB Layout



Circuit diagram

TSSE 6 -RA-1

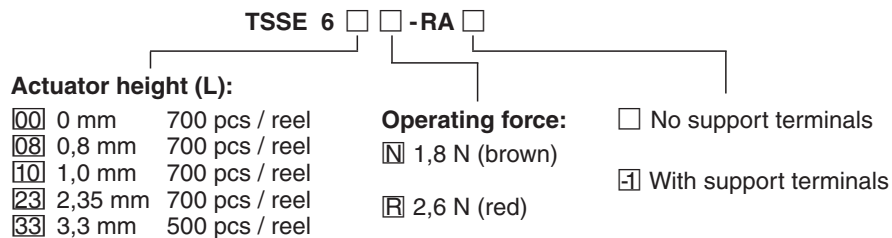


PCB Layout

washable



Ordering code:



Further types on request

Tact Switches for SMT

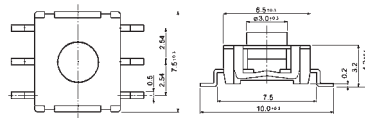


Specifications:

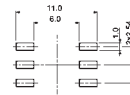
Contact rating:	TMS 1	48 V DC, 50 mA, max. 1 W
	TMS 3 / TMSE 3	24 V DC, 30 mA, max. 0,6 W
Contact resistance:		< 100 mΩ
Insulation resistance:		> 100 MΩ at 100 V DC
Dielectric strength:		250 V, 50 Hz for the duration of 1 minute
Operating temperature:		- 25 °C to + 70 °C
Mechanical life:		minimum 100 000 operations
Contacts:		silver-plated, terminals tin-plated; TMSE 3 with ground terminals
Material:	TMS 1	case: 6TPA resin; button: silicon, black; frame: stainless steel
	TMS 3	case: PA; button: PA, black; frame: stainless steel
	TMSE 3	case: PA washable; button: silicon, grey; frame: stainless steel
Operating force:	TMS 1 / TMSE 3	2,0 N
	TMS 3	1,2 N
Mounting:		on pc-board – SMD

Models: Switching functions

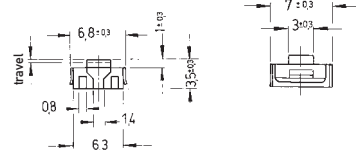
TMS 1
travel 0,5
off – mom



Circuit diagram:

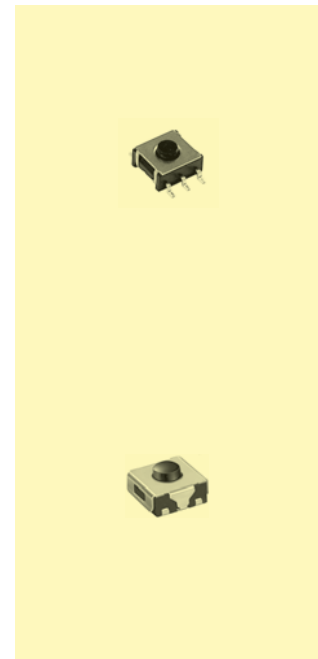
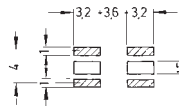
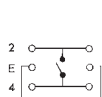


TMS 3
travel 0,25
off – mom



TMSE 3
travel 0,5
off – mom

Circuit diagram:



Soldering conditions: TMS1 reflow-soldering – max.: 40 sec, 230° C
peak temperature: 250° C
TMS3/TMSE3 reflow-soldering – max.: 40 sec., 230° C
peak temperature: 255° C

Packing see next page