

Multi-Function Tact Switches for SMT

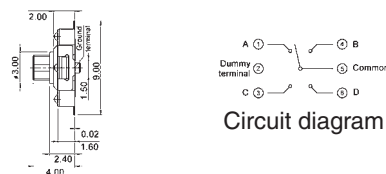
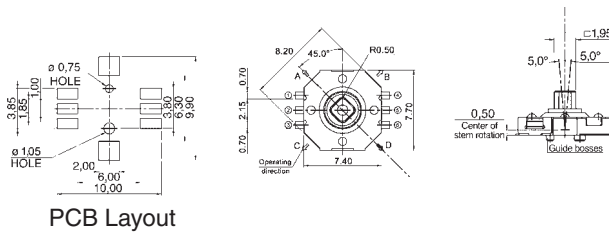
Specifications:

Contact rating:	12 V DC, 50 mA
Contact resistance:	< 100 mΩ
Insulation resistance:	> 100 MΩ
Dielectric strength:	250 V AC (50 Hz or 60 Hz) for 1 minute
Operating temperature:	- 20° to + 70° C
Operating force:	4 directions: 1,6 ± 0,5 N
Mechanical life:	minimum 100 000 cycles
Material:	Cover: Nickel, silver-plated Stem: high-temp. LCP Contact: stainless steel with silver cladding Terminal: brass, silver-plated Base: high-temp. LCP, black
Packing:	850 pcs/reel

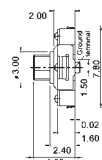
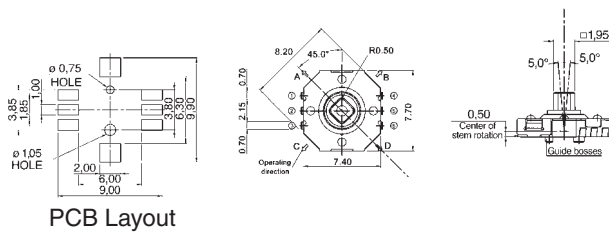
3

Models:

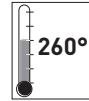
TSSJ 4



TSSJ 4-J



Miniature Tact Switches for SMT

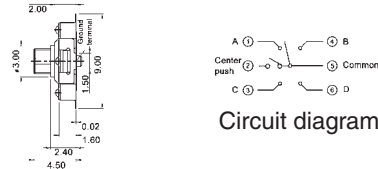
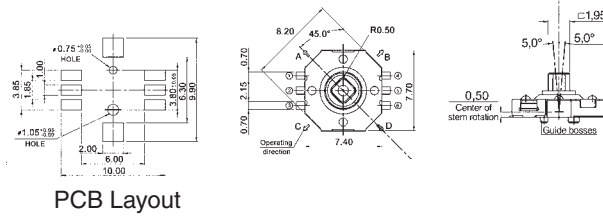


Specifications:

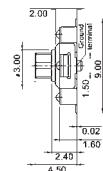
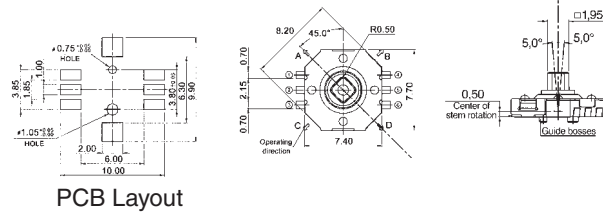
Contact rating:	12 V DC, 50 mA
Contact resistance:	< 100 mΩ
Insulation resistance:	> 100 MΩ
Dielectric strength:	250 V AC (50 Hz or 60 Hz) for 1 minute
Operating temperature:	- 20° to + 70° C
Operating force:	center: 3,2 N ± 0,5 N; 4 directions: 1,6 N ± 0,5 N
Mechanical life:	minimum 100 000 cycles
Material:	Cover: Nickel, silver-plated Stem: high-temp. LCP Contact: stainless steel with silver cladding Terminal: brass, silver-plated Base: high-temp. LCP, black
Packing:	850 pcs/reel

Models:

TSSJ 5



TSSJ 5-J





Multi-Function Tact Switches

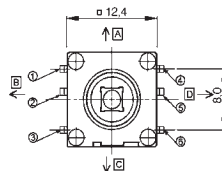
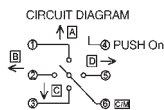
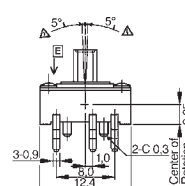
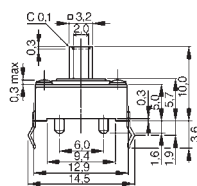
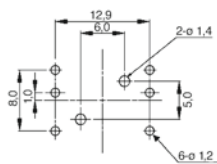
Specification:

Contact rating:	15 V DC, 20 mA
Contact resistance:	< 100 mΩ
Insulation resistance:	> 100 MΩ
Dielectric strength:	100 V, 50 Hz for the duration of 1 minute
Operating temperature:	- 25° to + 70° C
Mechanical life:	minimum 50 000 cycles per direction
Contacts:	phosphor bronze silver-plated
Mounting:	TSSJ 30: on pc-board TSSJ 30: on pc-board – SMD
Soldering conditions:	TSSJ 30: reflow-soldering: 245° C, 2,5 sec max.
Packing:	300 pcs/tray

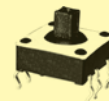
3

Models:

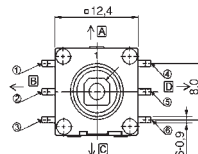
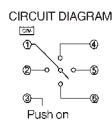
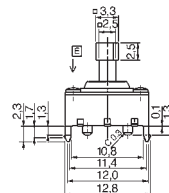
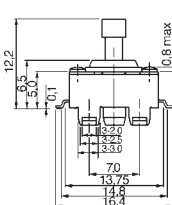
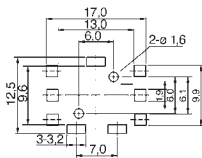
TSSJ 31



Direction	Connection
A	1 - 6
B	2 - 6
C	3 - 6
D	5 - 6
E (push)	4 - 6



TSSJ 30



Direction	Connection
A	1 = 4
B	1 = 2
C	1 = 6
D	1 = 5
E (push)	1 = 3



