

TYPICAL INDICATOR ORDERING EXAMPLE



Mounting Types	
PCB Mounting	
01	Square
03	Rectangular
* Snap-in Mounting	
04	Square
06	Rectangular
06B	Rectangular with Side Barriers
* Standard with Solder Lug terminals	

Housing	
K	Black
Terminals	
W01	Silver Solder Lug* (for Snap-in Mounting)
W03	Silver Straight PC (for PCB Mounting)

LEDs	
Bright LED	
5C	Red
5D	Amber
5F	Green
Super Bright LED	
6B	White
6F	Green
6G	Blue
Available with Square only	

Cap Types & Colors			
Full Face Illuminated Cap for Bright LED			
Lens/Diffuser Colors			
CB	Red/White	FF	Green/Green
CC	Red/Red	*FJ	Green/Clear
*CJ	Red/Clear	JB	Clear/White
DB	Amber/White	JC	Clear/Red
DD	Amber/Amber	JD	Clear/Amber
*DJ	Amber/Clear	JF	Clear/Green
FB	Green/White	*JJ	Clear/Clear
* Not available with Rectangular cap			

Full Face Illuminated Cap for Super Bright LED	
JB	Clear Lens/White Diffuser
For Square only; see cap detail page	

Spot Illuminated Cap for Bright & Super Bright LEDs	
AB	Black with White Window
Rectangular available for Bright only	

* Wire harness & cable assemblies offered only in Americas

DESCRIPTION FOR TYPICAL ORDERING EXAMPLE

UB01KW035C-JC



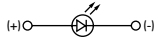
LED COLORS & SPECIFICATIONS

The electrical specifications shown are determined at a basic temperature of 25°C.
If the source voltage exceeds the rated voltage, a ballast resistor is required.
The resistor value can be calculated by using the formula in the Supplement section.

The LED is an integral part of the indicator and not available separately.

	Color	Bright			Super Bright			Unit
		5C	5D	5F	6B	6F	6G	
Forward Peak Current	I_{FM}	30	30	25	25	25	25	mA
Continuous Forward Current	I_F	20	20	20	20	20	20	mA
Forward Voltage	V_F	1.85	2.0	2.1	3.8	3.8	3.8	V
Reverse Peak Voltage	V_{RM}	5	5	5	5	5	5	V
Current Reduction Rate Above 25°C	ΔI_F	0.40	0.42	0.46	0.47	0.47	0.47	mA/°C
Ambient Temperature Range		-25° ~ +50°C			-25° ~ +50°C			

Note for Super Bright:

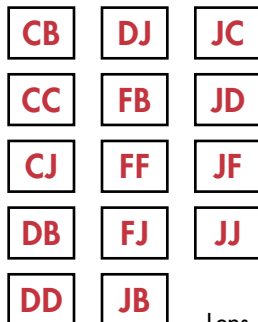


CAP TYPES & COLOR COMBINATIONS

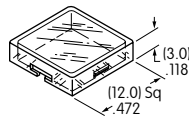
Full Face Illuminated Cap for Bright LED

Lens/Diffuser

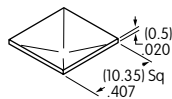
Colors Available for Square Cap:



AT4074
Lens



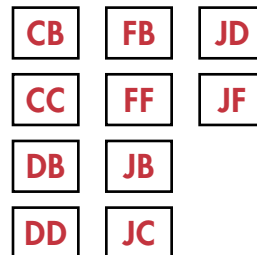
AT4075
Diffuser



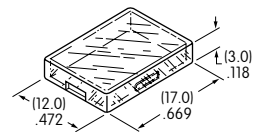
Lens & Diffuser Material: Polycarbonate

Lens/Diffuser

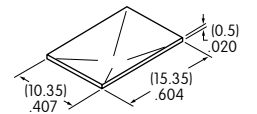
Colors Available for Rectangular Cap:



AT4117
Lens



AT4118
Diffuser



Lens Finish: Glossy

Diffuser Finish: Textured

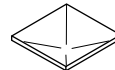
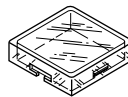
Full Face Illuminated Cap for Super Bright LED

Lens/Diffuser

Colors Available for Square Cap:



AT4074 Lens & AT4075 Diffuser
(Dimensioned above)



Lens & Diffuser Material: Polycarbonate

Lens Finish: Glossy

Rectangular lens & diffuser are not available for combining with super bright LED.

Diffuser Finish: Textured

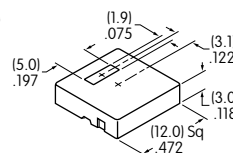
Spot Illuminated Caps



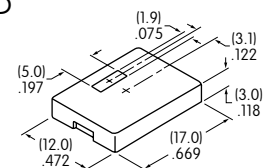
Black Cap with Translucent White Window for LED Display

Material: Polycarbonate
Finish: Matte

AT4119 Square for Bright and Super Bright LED



AT4120 Rectangular for Bright LED



Color Codes:

A Black

B White

C Red

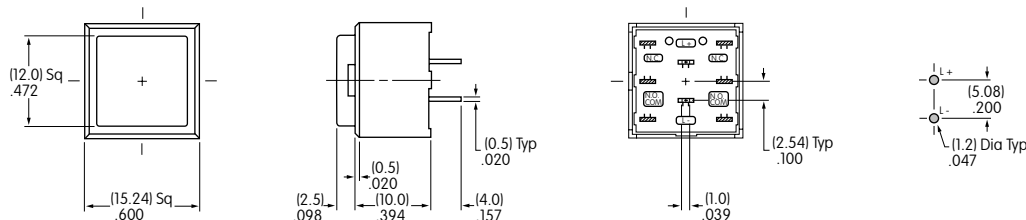
D Amber

F Green

J Clear

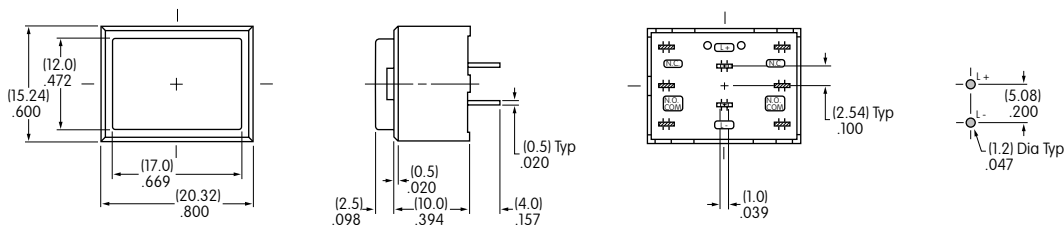
TYPICAL INDICATOR DIMENSIONS

Square • PCB Mount



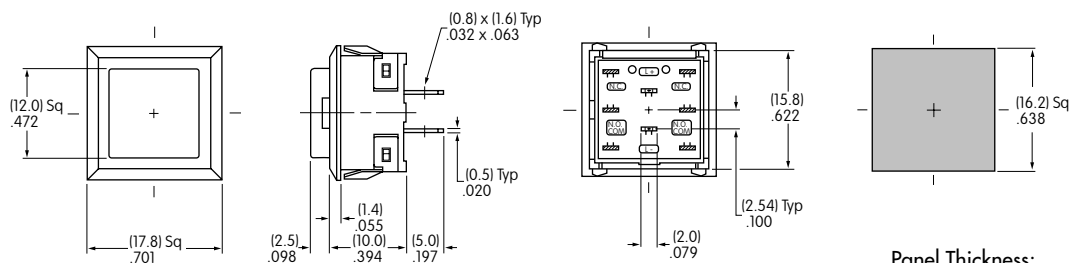
UB01KW035C-JC

Rectangular • PCB Mount



UB03KW035F-FF

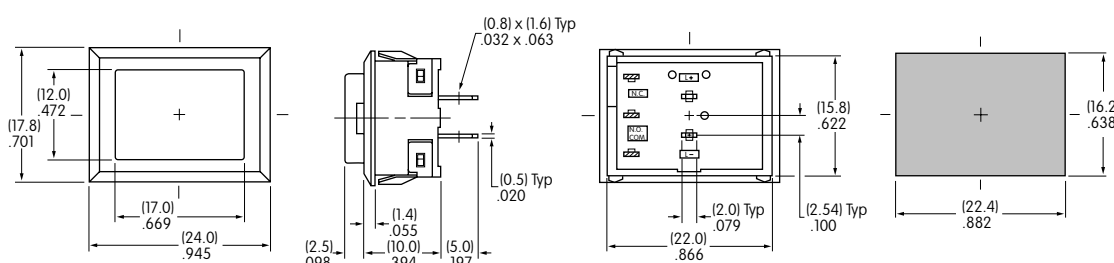
Square • Snap-in Mount • Built-in Bezel



Panel Thickness:
1.0 ~ 3.2mm (.039 ~ .126")

UB04KW015C-JC

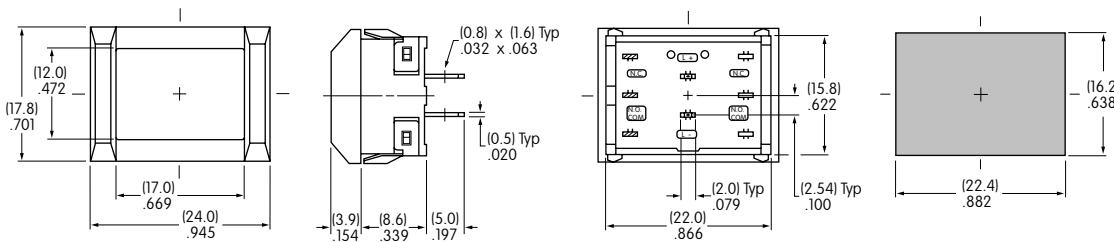
Rectangular • Snap-in Mount • Built-in Bezel



Panel Thickness:
1.0 ~ 3.2mm (.039 ~ .126")

UB06KW015D-DD

Rectangular • Snap-in Mount • Built-in Side Barriers



Panel Thickness:
1.0 ~ 3.2mm (.039 ~ .126")

UB06BKW015F-FF