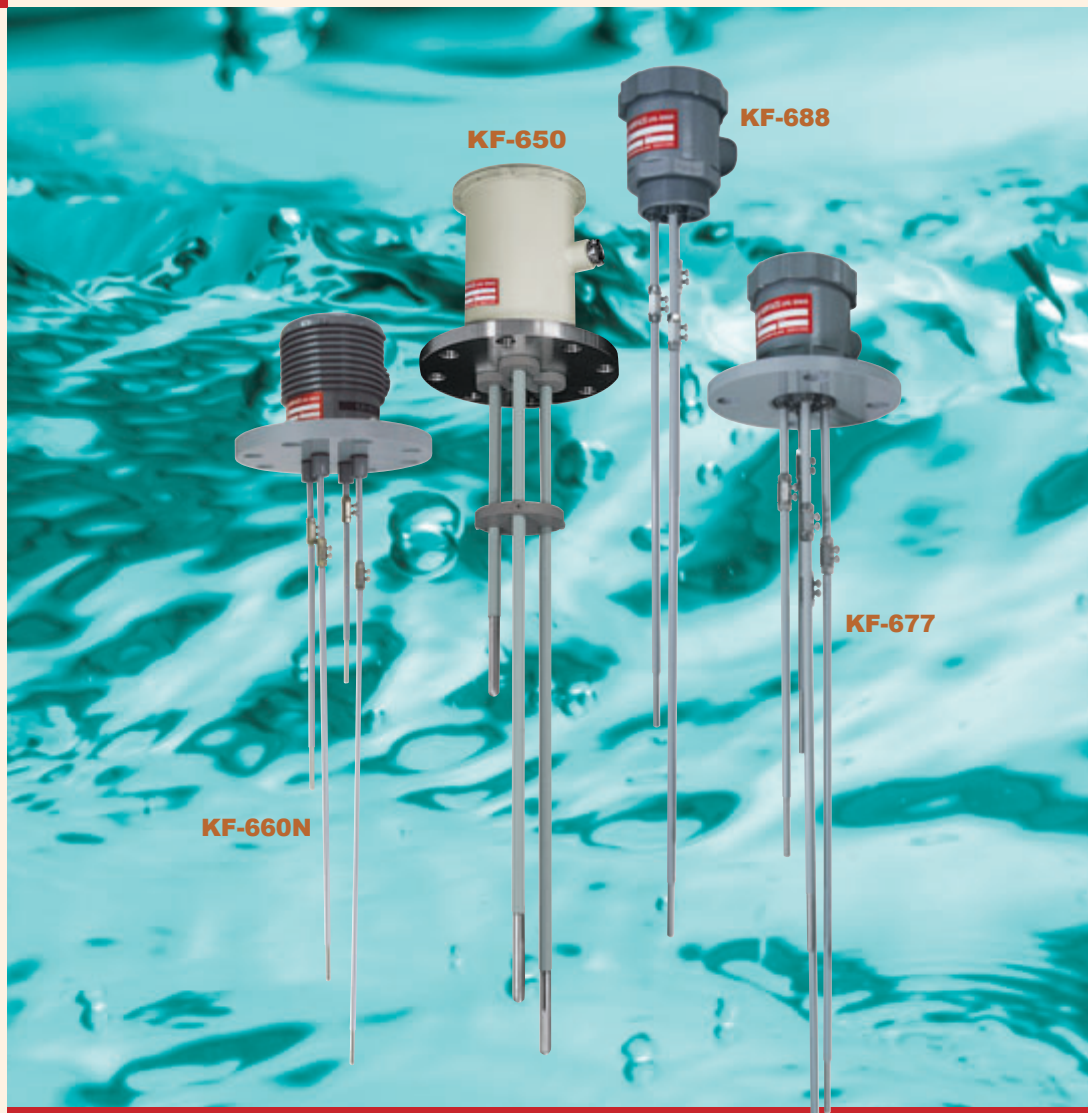


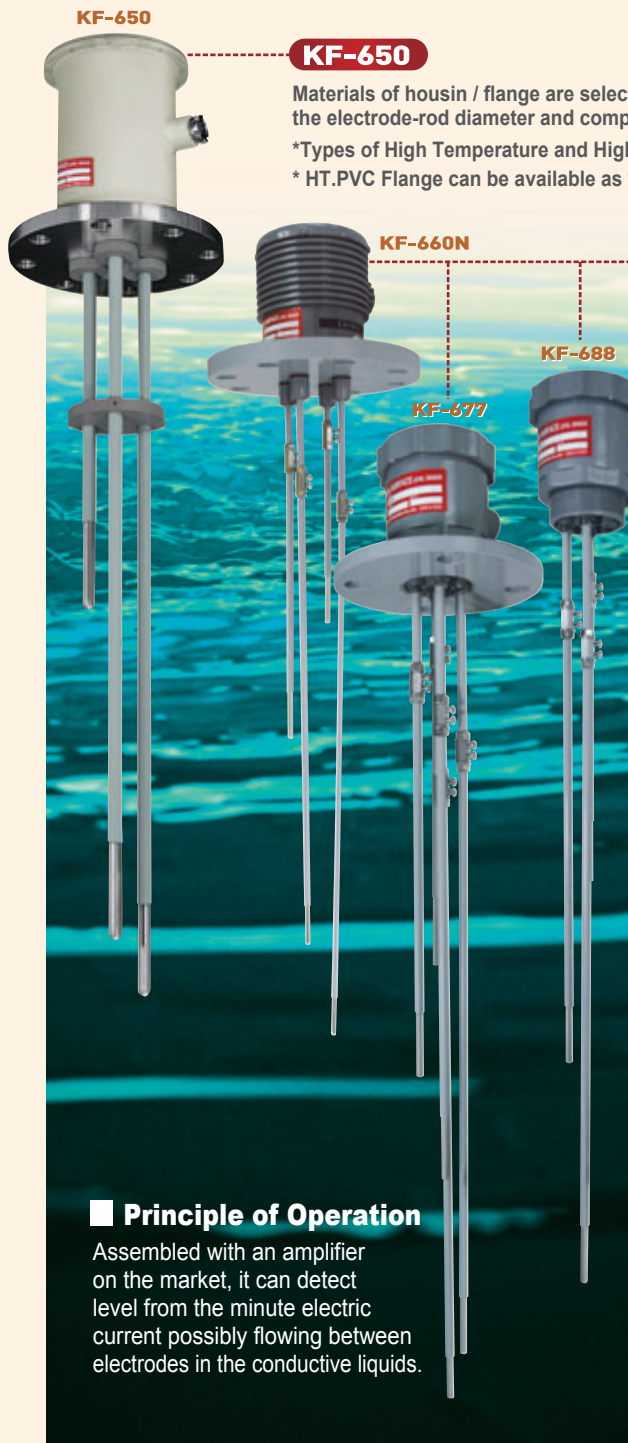
# ELECTRODE TYPE LEVEL SWITCH Model **KF-600**



**Best Selling Line In Liquid Level Control - Sales Record  
And Reliable Cost Performance**

# KF-600 ELECTRODE TYPE LEVEL SWITCH

**Liquid Control made of varied electrode materials in a sturdy housing can be applied to a variety of liquids.** \*Special specifications can be ordered.



### KF-650

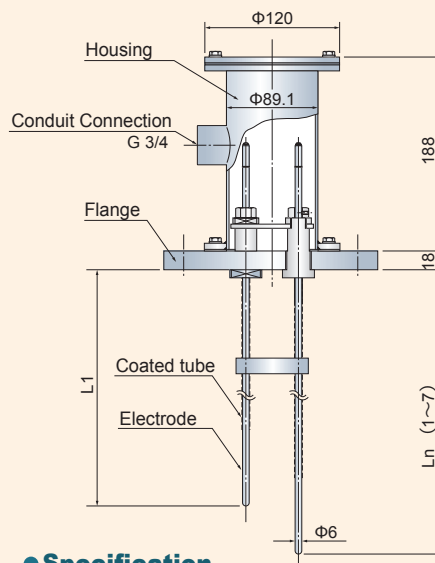
Materials of housin / flange are selectable. As for KF-650 Electrode Type Level Switch, the electrode-rod diameter and components can be selected.

- \*Types of High Temperature and High Pressure (KFB640) are also available.
- \* HT.PVC Flange can be available as well.

### KF-660N • 677 • 688

Only available is a housing type made of PVC. The pole bolt materials of Electrode Level Switch under KF-660N/677/688 can be selected. The choice of the electrode is  $\Phi 6$  in diameter only. \*ASME & JPI can also be manufactured.

### KF-650



### ● Specification

- Diameter of Electrode :  $\Phi 6 / 8 / 10 / 15 / 20$ mm
- Quantity of Electrode (n) : 1 - 7
- Separator : Standard, 1 each by every 2000mm
- Flange : over 100A, JIS10K
- Electrode Material : 304SS, 316SS, 316LSS, Titanium, Hastelloy C & B
- Flange Material : PVC, 400SS, 304SS, others
- Housing Material : PVC, SGP, 304SS, others
- Painted color : Housing / munsell 5Y 7/1 (SGP only), Flange / munsell 5Y 7/1 (400SS only)
- Mat. of sheathed Electrode : PVC tube, Teflon tube
- Mat. of stilling well : PVC, SGP, 304SS

\*Possibly variable by  $\pm 50$ mm \* Electrode rod is basically an unspliced bar.  
 \*Coupling arrangement is possible (in case of longer rod).  
 \*Withstand pressure type can be available.  
 \*Option : Housing, Flange / hot-dip galvanizing.

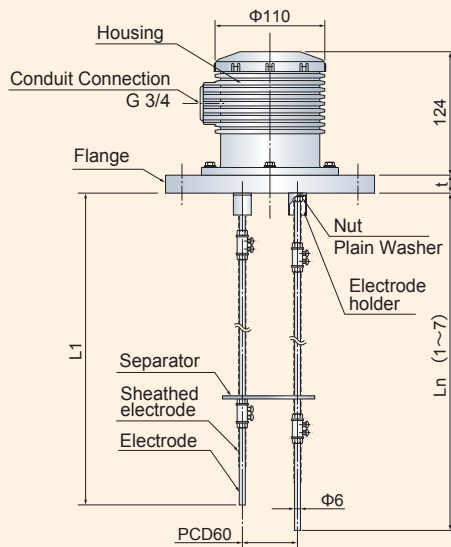
### ■ Principle of Operation

Assembled with an amplifier on the market, it can detect level from the minute electric current possibly flowing between electrodes in the conductive liquids.

**KF-650, Size of Flange / Electrode** \*Square flange and ASME/JPI flange can be available.

Diameter of Electrode	$\Phi 6 / \Phi 8$	$\Phi 10 / \Phi 12$	$\Phi 15 / \Phi 20$			
Quantity of Electrode	1 - 7	1 - 3	4 - 7	1	2 - 4	5 - 7
Smallest flange = 10K JIS	100A		125A	100A	125A	200A

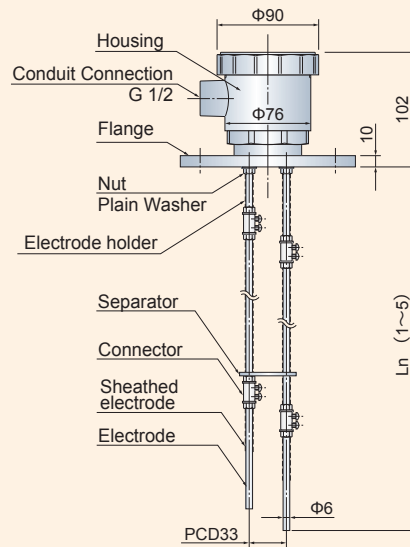
### KF-660N



#### ● Specification

- Diameter of Electrode** : Φ6mm only
- Length of Electrode** : Connected at every 1000mm for extension
- Quantity of Electrode (n)** : 1 - 9
- Separator** : Standard, 1 each by every 2000mm
- Flange** : over 100A, JIS10K
- Flange Material** : PVC, HT.PVC
- Housing Material** : PVC

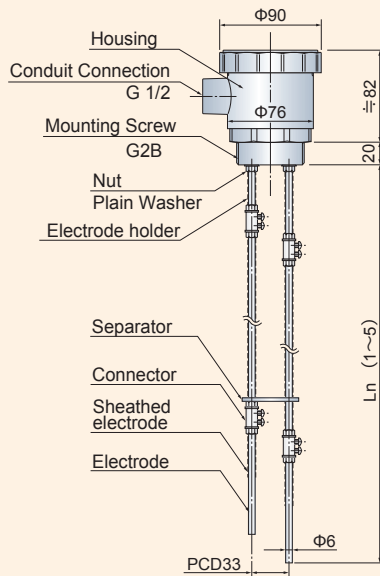
### KF-677



#### ● Specification

- Diameter of Electrode** : Φ6mm only
- Length of Electrode** : Connected at every 1000mm for extension
- Quantity of Electrode (n)** : 1 - 5
- Separator** : Standard, 1 each by every 1000mm
- Flange** : over 50A - 80A, JIS10K
- Flange Material** : PVC
- Housing Material** : PVC

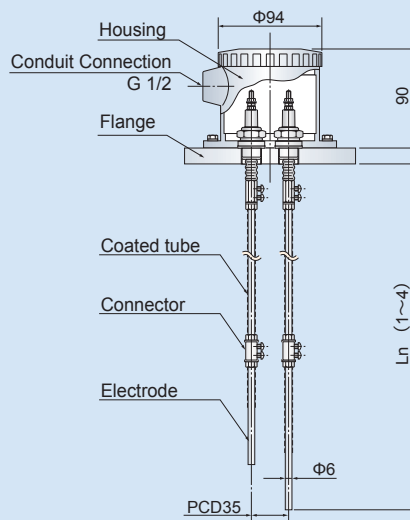
### KF-688



#### ● Specification

- Diameter of Electrode** : Φ6mm only
- Length of Electrode** : Connected at every 1000mm for extension
- Quantity of Electrode (n)** : 1 - 5
- Separator** : Standard, 1 each by every 1000mm
- Mounting Screw** : G2B
- Mounting Screw Material** : PVC
- Housing Material** : PVC

### KFB 640 Special/High Temp. High Pressure, others



#### ● Specification

- Diameter of Electrode** : Φ6mm only
- Length of Electrode** : Connected at every 1000mm for extension
- Quantity of Electrode (n)** : 1 - 4
- Separator** : Standard, 1 each by every 1000mm
- Flange** : 50A, JIS10K
- Electrode Material** : 304SS, 316SS, Titanium, Hastelloy C
- Flange Material** : 400SS, 304SS, 316SS
- Housing Material** : AC
- \*When the electrode exceeds 5, use the housing for KF-650 or the like.

#### ■ Material Table (KF-660N / -677 / -688) \*Electrode consisting of hastelloy C & B is an unspliced bar.

<b>Material of electrode rod</b>	▶ 304SS	316SS	316LSS	Titanium	Hastelloy C	HastelloyB
<b>Mat. of sheathed electrode</b>	▶ PVC	Teflon-tube	others	[		]
<b>Material of separator</b>	▶ PVC	Teflon	others	[		]
<b>Material of stilling well</b>	▶ PVC	others	[			]

## Type Designation

**KF-6**   -

**Quantity of Electrode** = 1, 2, 3, 4, 5, 6, 7

**Specification = 50**

**Terminal box fixing** = Bolt on flange.  
**Flange dimensionstable** = The size is available from the smallest one shown on the table.  
**Material** = Selective  
**Diameter of Electrode** = Φ6/ 8/ 10/ 15/ 20  
**Quantity of Electrode** = up to 7 rods

**= 60N**

**Terminal box fixing** = Integrated flange  
**Flange dimensionstable** = Available from the minimum size of 100A, JIS10K.  
**Material** = Only available is the standard housing/flange made of PVC.  
 Material of other parts is selective.  
 \*Option : Ones made of HT & PVC can be available.  
**Diameter of Electrode** = Φ6 only  
**Quantity of Electrode** = up to 9 rods

**= 77**

**Terminal box fixing** = Integrated flange  
**Flange dimensionstable** = 50A – 80A, JIS10K  
**Material** = Only available is the standard housing/flange made of PVC  
 Material of other parts is selective.  
**Diameter of Electrode** = Φ6 only  
**Quantity of Electrode** = up to 5 rods, 6-rod type is KF-670-6.

**= 88**

**Terminal box fixing** = Solid Type, Mounting by screw.  
**Mounting Dimensions** = G2B Screw only  
**Material** = Only available is the standard housing/flange made of PVC  
 Material of other parts is selective.  
**Diameter of Electrode** = Φ6 only  
**Quantity of Electrode** = up to 5 rods, 6-rod type is KF-680-6.

### Special Specification / High temp, High pressure, others

**KFB640** -

**Quantity of Electrode** = 1, 2, 3, 4

**Specification =** Terminal box fixing = Bolt on flange

Flange dimensionstable = 50A, JIS10K

Material = Terminal box is made of AC and flange 304SS (standard)

Diameter of Electrode = Φ6 only

Quantity of Electrode = up to 4 rods, 5-rods Consult with Sales staff when you need more than.

## Number / Length of Electrode

TAG.No	NBR	n = POLE	Shor test ←————→ Longest						
			L 1	L 2	L 3	L 4	L 5	L 6	L 7

### Line of business

- Rotary Paddle Type Level Switch
- Vibration Type Level Switch
- Swing Type Level Switch
- Acoustic Level Switch
- Capacitance Type Level Switch
- Capacitive Proximity Sensor
- Capacitance Type Level Indicator
- Diaphragm Type Level Switch
- Tiit Switch
- Leak Type Level Switch
- Microwave Type Switch
- Sounding Bob Type Level Indicator
- Flow Switch
- Conductance Type Level Switch
- Float Switch
- Float Type Level Indicator
- Ultrasonic Type Level Indicator
- Equipments For Conveyor Lines
- Dust Monitor System
- Zirconia Oxygen Analyzer
- Laser Type Level Indicator
- RADAR Type Level Indicator
- On-line Sensors for Accurate Liquid Analysis
- Ultrasonic Flow meter

Nuclear Power Generation to Rice Milling  
 All-round Manufacturer of Level Controllers for Powder, Granules and Liquid

**KANSAI Automation Co., Ltd.**



Design, development, and manufacture of level measuring sensors

\*Please be sure to read USER'S GUIDE, Installation & Operation Instructions before using the instrument.  
 \*The specifications herein may be subject to change without advance notice.

